



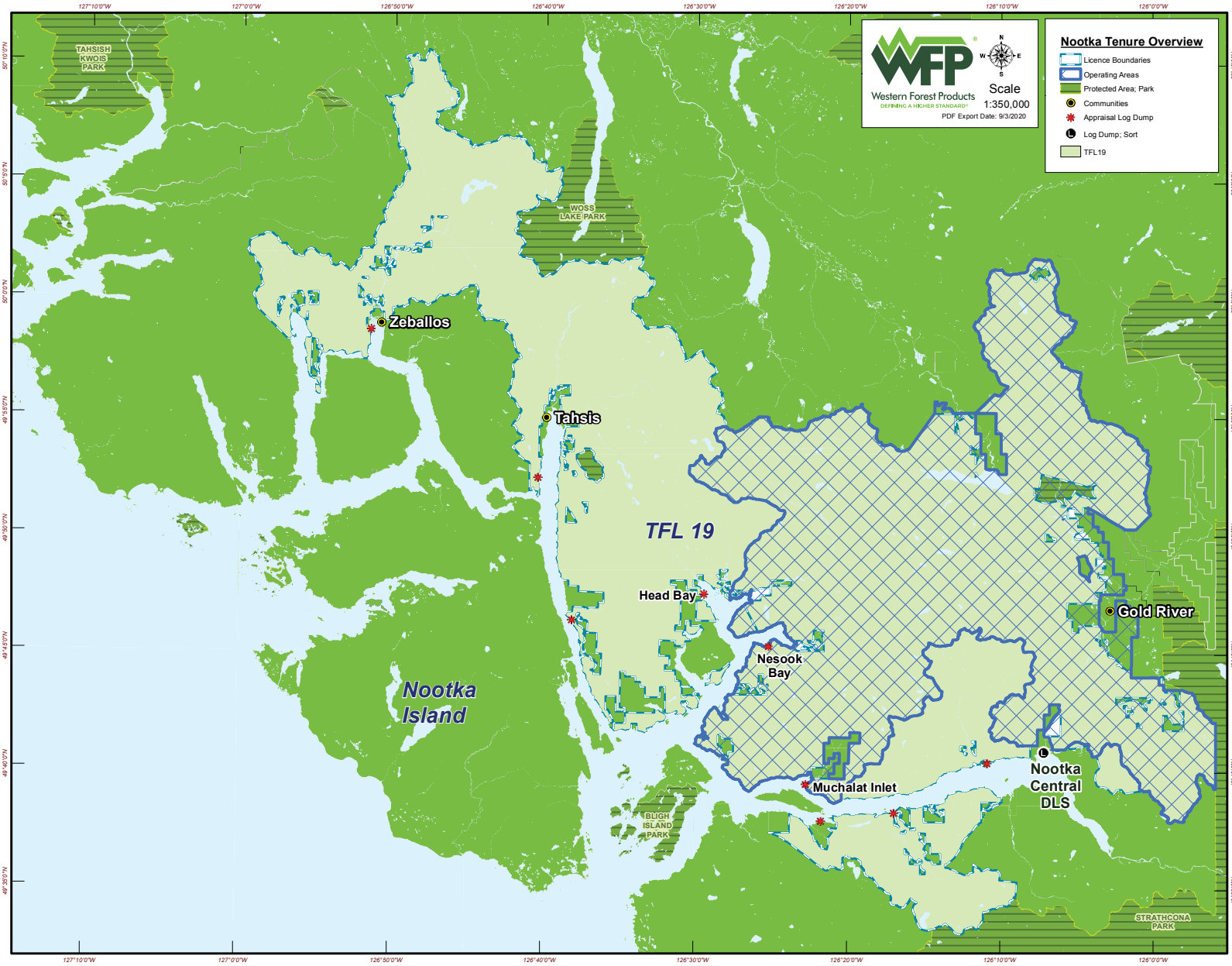
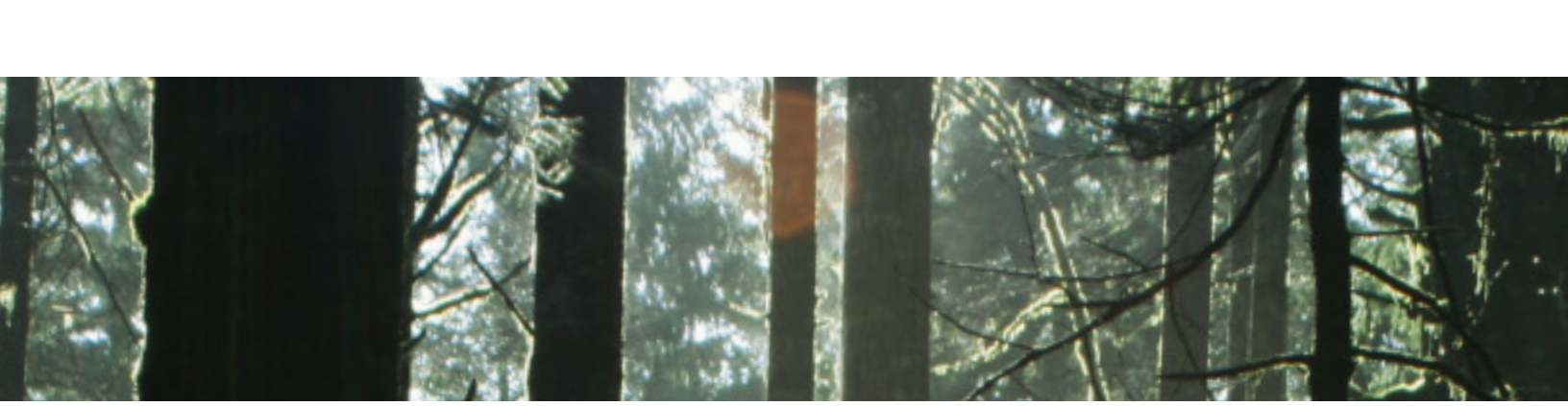
Western Forest Products
DEFINING A HIGHER STANDARD™

CONTRACTOR OPPORTUNITIES

- Dryland Sort and Boom Contractor
- Harvesting and Road Construction Contractor

At Western, upholding the highest safety standards, delivering on our commitment to sustainable forestry and respecting and supporting our employees and the communities where we operate is central to how we operate.


We partner with contractors in many parts of our operations. We are currently inviting proposals for timber harvesting and road construction as well as dryland sort and boom activities on a portion of our timberland operations located on west central Vancouver Island around Nootka Sound. The successful applicants will uphold Western's strong commitment to corporate social responsibility and maintain Western's high levels of safety, sustainability and community and employee support in this operation.





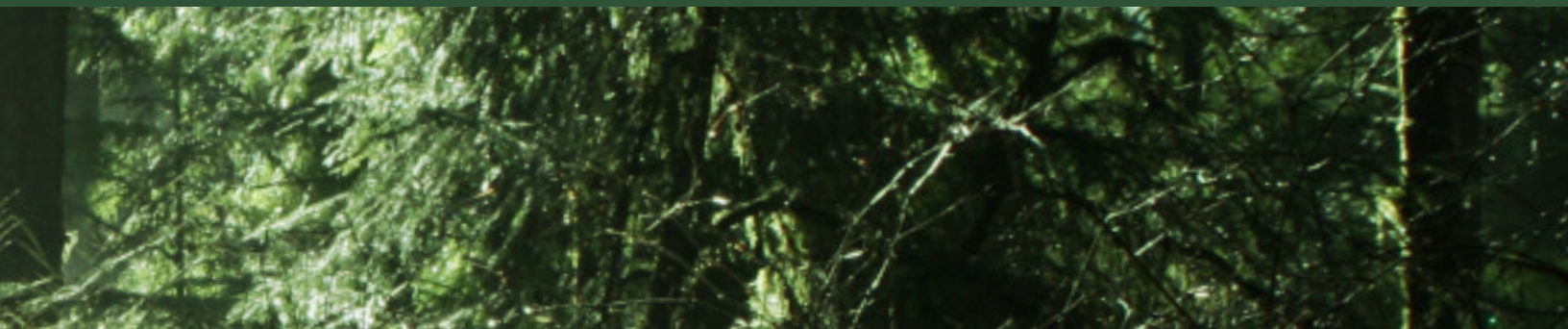
ABOUT **WESTERN FOREST PRODUCTS TREE FARM LICENSE 19**

Western is an integrated forest products company building a margin-focused log and lumber business to compete successfully in global softwood markets. With operations and employees located primarily on the coast of British Columbia and Washington State, Western is a premier supplier of high-value, specialty forest products to worldwide markets. Western has a lumber capacity in excess of 1.1 billion board feet from eight sawmills and four remanufacturing facilities. Our vision is to produce the most sustainable building materials on the planet.



Tree Farm License 19 (TFL 19) came under the management of Western Forest Products (Western) in May 2006. It is located on the west side of Vancouver Island in the vicinity of Nootka Sound. The total area of the TFL covers roughly 170,000 hectares.

The current allowable annual cut (AAC) for TFL 19 is approximately 730,000 cubic metres.



THE OPPORTUNITIES

- Western currently employs a small fleet of conventional coastal equipment in TFL 19 to undertake the harvest. Opportunities for innovation exist, and we look forward to that conversation.
- Many of our crew have lived and worked in the area for decades. They are safety-focused, EMS-trained and highly skilled. This skill set and experience is much sought after in the industry.
- Logging production is delivered to our Nootka Central Sort—located at the head of Muchalat Inlet—by truck and in boom form by water.
- The Nootka Dryland Sort and Boom contract will handle between to 300,000 – 400,000 m³ annually.
- The Harvesting contract opportunity covers ~180,000 – 220,000 m³ per year of predominantly old growth harvesting normally undertaken in ~9 months per year (March – November, with typically a one-month curtailment for heat in the summer).
- Western currently employs ~180 contractor partners throughout its operations and looks forward to working with a high-performing contractor to take on the Gold River opportunity.

To learn more about this opportunity and obtain a copy of the Request for Proposals, please contact:

VINCE DEVLIN

OPERATIONS MANAGER

250.283.2825 | contracting@westernforest.com

The deadline for proposals is November 16, 2020.

Parties will be contacted after November 30 based upon their submissions and advised of next steps.



Western Forest Products
DEFINING A HIGHER STANDARD™