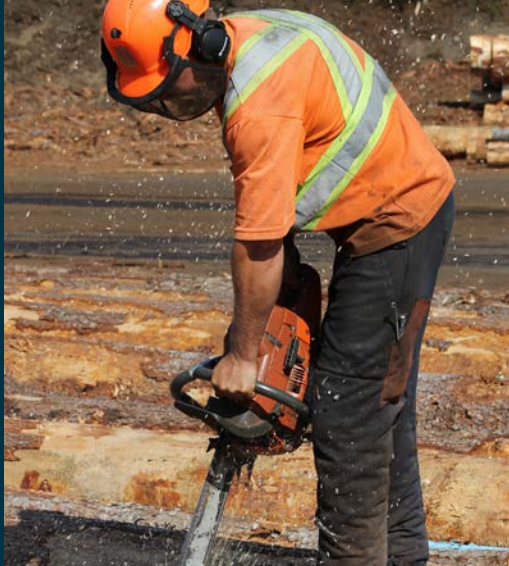




THE TRUCK LOGGERS ASSOCIATION

Our strength is in our roots.



ADVOCACY



MEMBERSHIP
HANDBOOK



BENEFITS



COMMUNITY



 |  |  |  @truckloggerBC | www.tla.ca



Coastal Mountain *FUELS*

**We are pleased to be an affinity partner with
The Truck Loggers Association.**

We offer preferred pricing and discounts on all of the following services to TLA Members:

- On-site Refuelling
- Delivered Fuel
- Lubricants
- Cardlock Fuel
- DEF, at the Pump and Bulk Delivered
- Home Heating Fuel
- Marine

We also offer exclusive discounts at over 1,500 Petro-Canada[™] retail gas stations and 240 Petro-Pass[™] truck stops across Canada.

With locations throughout Vancouver Island and southwestern BC, we can be your single source provider for all your fuel and lubricant needs.

Contact us at www.cmfuels.ca or 1-800-798-Fuel (3835) for more information.

Petro-Canada is a Suncor Energy business. [™] Trademark of Suncor Energy Inc. Used under licence.

TABLE OF CONTENTS



What is the role of the TLA? 5

ADVOCACY 6

BENEFITS 6

COMMUNITY 6

FAQ 8

What does the
TLA do for you? 10

How does the TLA work? 14

**Benefits and
Affinity Programs 15**

“The TLA is a strong, collaborative leader in our industry, a vocal advocate for sustainable, prosperous forestry in our province and a champion for our rural resource-based communities. This is why I am a proud and engaged member.” – TLA member

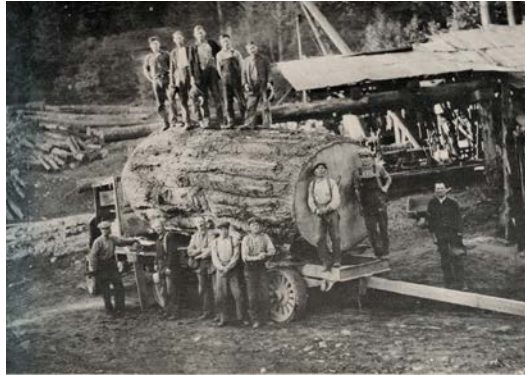
“Being a member of the TLA has given the leadership of my company a voice in the forest industry that I didn’t know existed. This voice allows our company to be on the leading edge of change helping keep us safe, competitive and strong for generations to come. I can’t imagine not having the TLA for support in this time of change.” – TLA member



What Is The Role Of The Truck Loggers Association?

The TLA is the official voice of independent forest contractors located throughout BC. It was established in 1943 by a group of independent coastal loggers to promote their voice in policy and legislation.

Today, we continue to represent hundreds of community-based business members who live and work throughout BC. The members of the Truck Loggers Association have helped build our communities and we continue our commitment to their future well-being. The TLA members are critical to a strong, stable forest products industry and, by definition, a steady economy for the province.



General Office Information

725 – 815 West Hastings Street
Vancouver, BC V6C 1B4

☎ 604.684.4291

☎ 604.684.7134

✉ membership@tla.ca

🌐 www.tla.ca

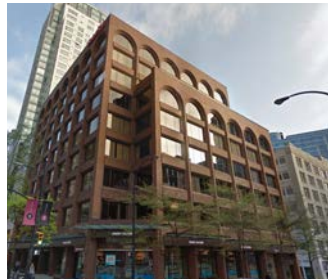
Hours of Operation

Monday – Friday 8:00 am – 5:00 pm

Stop by for a coffee the next time you're in town!

Have a meeting in downtown Vancouver and not sure where to host it?

We welcome all members to contact us and if our boardroom is available, consider it yours!



ABCs OF THE TLA

ADVOCACY BENEFITS COMMUNITY



Our strength is in our roots. The TLA works on behalf of our members to promote their role in BC's sustainable forest industry and we support the economic well-being of the logging contractor community.

Advocacy

We support our members and the forest industry through advocacy. We lobby government to ensure legislative changes support our forest contractors. We also connect with all levels of government, community decision makers and licencees, to make sure the interest of timber harvesting contractors and their importance to the industry is understood.

Benefits

The TLA understands that the nature and size of our members' businesses can make it difficult to secure effective benefit and insurance programs for their employees and families. The TLA is proud of the savings we are able to bring to our members through our benefits programs. We also offer members excellent discounts through our affinity programs on items such as safety gear, eyewear, fuel, hotels and vehicles!

Community

The TLA brings members together for networking opportunities through our annual convention and trade show as well as our membership networking events (which includes dinner followed by presentations on industry relevant topics), technical seminars and golf tournament, as well as our member-only directory. We also produce a quarterly magazine, *Truck LoggerBC*, monthly



Advocacy Community BENEFITS

e-newsletter the *Grapple Yarder*, have an up-to-date website and growing social media presence. Our door is always open to hear about issues facing our membership and how the TLA can assist. TLA members also support the community by raising funds at our events that help support forestry education and community programs. Over the years, the TLA Forestry Education Fund has supported scholarships for education in forestry, high school forestry programs, trade scholarships, Logger Sports in various communities, forestry museums as well as the Festival of Forestry Program to raise teacher awareness of the industry. The ongoing support and commitment of our members to their communities is the reason for this success.

More Information

Our website, www.tla.ca, is an excellent source of information. If you have any comments, suggestions or feedback regarding our advocacy or lobby efforts, benefit services, events or publications we would like to hear from you. Please contact us at membership@tla.ca or 604.684.4291



FREQUENTLY ASKED QUESTIONS

1. Membership Payment Options

A. Can I pay by credit card?

Yes, the TLA accepts MasterCard, Visa and American Express.

B. Can I pay by cheque?

Yes, the TLA accepts business cheques for membership renewal but this does delay the approval process.

C. Can you invoice me?

Yes, we can send you an invoice via email. If you don't use email, we can fax or mail you a paper copy.

D. Will my payment be pro-rated?

Yes, for new members the payment will be calculated based on the month you join. The TLA membership year begins May 1st and runs through to April 30th of the following year.

2. Approval Process

A. Why do I need to be approved?

New members need to be approved by the board of directors because each member company becomes a representative of the TLA and we want to ensure a strong, mutually beneficial relationship.

B. How long does the approval process take?

The approval process takes approximately two to five business days.

3. Multi-Company Membership Structure

A. If I have several companies, does each company need to become a member?

Where a multiple company organization wishes to be a member of the TLA, a single company name can be registered as the primary company; however, all affiliated companies must be listed as dues for Industrial Members are calculated based upon the total number of employees in all affiliated companies.

4. Health Benefits and Equipment Insurance

A. How long do I have to wait to receive health benefits?

Once you have been approved as a TLA member, a representative from Johnstone's Benefits will contact you to review your specific needs.

B. What is the process to get equipment insurance?

Once you have been approved as a TLA member, a representative from JLT will contact you to review your specific insurance requirements.

5. Membership Renewal

A. When do I have to pay my renewal fees?

The TLA members are invoiced on May 1st of each year.

B. Why do I have to pay a membership renewal fee?

When you pay your membership fees, you purchase one year of TLA membership. Each year you need to renew your membership because membership fees are a main source of revenue which funds the advocacy work the TLA does on your behalf as well as operational costs.

C. How does renewal affect my health benefits and equipment insurance?

If you do not pay your annual membership renewal fee and your membership lapses, you will be removed from the TLA membership list and will no longer receive TLA membership services. This includes access to TLA health benefits and equipment insurance.

6. Member Contact Information

A. Why do you need my email address?

The TLA will send you most of our information via email because it's the most cost effective method. We send out a monthly e-newsletter, Hot Sheet emails for time-sensitive information as well as your membership invoice and other information we feel is valuable to TLA members.

B. Who should I send my updated address and contact changes to?

You can make the changes to your contact information yourself by logging into our member-only database through our website or you can send your changes to contact@tla.ca. Accurate contact information ensures timely communication. We do not share your contact information.

7. Member Companies and Employees

A. Are my employees considered TLA members?

When a company becomes a TLA member, all company employees become representatives of the member company and can be eligible to take advantage of the benefits that come with membership where applicable. Please provide the total number of employees on your membership application form.

B. Do I need to give you my employees' contact information?

No. However, if you would like your employees to receive a copy of Truck LoggerBC magazine, the TLA e-newsletter, invites to member events, etc. then providing their mailing and email addresses allows them to keep up-to-date as well.

8. Membership Changes

A. How do I cancel my membership?

You can cancel your membership at any time by contacting the TLA by phone or email and requesting to end your membership.

B. What happens if my membership lapses?

If you do not pay your annual membership renewal fee and your membership lapses, you will be removed from the TLA membership list and will no longer receive TLA membership services. This includes access to TLA health benefits and equipment insurance. If you wish to rejoin, you will have to re-apply as a new member and go through the approval process once again.

C. What if my company changes ownership?

If your company changes ownership, the company remains a member for the remainder of the year. The new owner should update the company's contact information with the TLA and is responsible for renewing membership on May 1st so membership renewal is seamless.

WHAT DOES THE TRUCK LOGGERS ASSOCIATION DO FOR YOU?



Have a Voice... With Government and other Key Stakeholders

The TLA advocates on our members' behalf so that our collective voice informs policy makers of key issues that affect our members. Membership provides you with the opportunity to stay informed on forestry issues and be part of influencing government and public policy issues, which helps to ensure a productive and sustainable forest industry in BC.

Save... With Our Benefits, Insurance and Affinity Programs

The TLA is continuously enhancing the programs it offers to our members. As a member of the TLA, your organization will be able to provide your employees and their families with important services such as health benefits, equipment insurance and affinity programs that provide substantial savings for TLA members.

Build... Your Networks and Business

The TLA provides a forum for members to meet and build business relationships with other contractors, business owners, forestry associations and policy makers, politicians and community leaders where our members work and live. Networking opportunities are provided for members through face-to-face networking events, which include the golf tournament and the annual TLA Convention and Trade Show held in January of each year.



Compete... With Better Knowledge, Support and Industry Information

TLA members receive industry support and draw on the experience and knowledge of our directors, staff and other members when dealing with issues such as Government legislation, regulation and policies, and the latest developments that effect your business.

Be Informed... With Up-To-Date News and Information

TLA members receive timely information and updates on TLA activities, government policy changes and other industry related information via:

- **The TLA website where up-to-date information on training, workplace safety, information on changes in government policy, and new innovations in the forest industry are made available**
- ***Truck LoggerBC*, our quarterly magazine**
- **The *Grapple Yarder*, our monthly members-only e-newsletter**
- ***Hot Sheets*, our members-only industry e-announcements**
- **A members-only section of the website**
- **Free job postings for your company on the TLA website**

WHO WE ARE?

Membership Categories



Industrial Membership

The TLA was formed by Industrial members to represent their interests and we continue to strive to meet that objective. Industrial members come from all facets of the industry. Logging, forest road building and phase contractors make up the majority of Industrial members. But we also have forestry consultants, forest products manufacturers, tenure holders and brokers.

TLA Industrial members have full access to the TLA membership benefits and affinity programs. They are eligible to run for election to the TLA Board of Directors and hold voting rights at annual general meetings in terms of policy or by-law changes.

Associate Membership

Associate members can be a person, firm or organization who is engaged in work or services allied or associated with the forest industry. Equipment companies and suppliers, insurance brokers and investment companies are just some examples of our Associate members.

The TLA Associate members have full access to the TLA membership benefits and affinity programs; however, Associate members do not hold voting rights at annual general meetings in terms of policy, by-law changes or elections. In order to ensure our Associate members have a voice, selected Associate members are invited to participate as non-voting associate board directors.



Community Membership

Community leaders have demonstrated an increased interest in the forest industry and our workers who make up and support their communities. Our growing Community Membership is proof of this support and is a type of Associate Membership sharing the same benefits.

Board of Directors

The TLA Board of Directors represent the interests of our diverse membership to ensure a broad range of forestry and business matters are addressed and that actions are taken. There are currently 14 industrial or voting directors and five non-voting associate directors on the board.

To join the board of directors, Industrial members must run for election at the TLA annual general meeting which is held during the annual convention in January. Associate members join the TLA Board at the invitation of the TLA President.

Technical Committees

Technical committees are made up of Directors from the TLA Board as well as other volunteers from the coastal forest industry. The committees meet via conference call, a minimum of six times a year and work to achieve the TLA's goals with TLA staff support.

HOW DOES THE TLA WORK?

Get Involved with the TLA

The TLA recruits people for the board of directors in the fall of each year. Industrial and Associate members alike are welcome if they can commit the time to support the growth of the forest industry.

Not enough time to sit on the board? Perhaps supporting one of the various technical committees is more suited to you. The TLA currently has eight technical committees: Aboriginal Affairs, Communications, TLA Forestry Education Fund Committee, Events, Forestry, Membership & Affinity Programs, Pricing & Marketing, and Safety, Training and Industrial Relations.

Remember the world belongs to those who show up! This is your chance to have your voice heard! If you are currently a TLA member and would like to be more involved in the work the TLA does through joining a committee or running for a seat on the board of directors, contact us at **membership@tla.ca** or **604.684.4291** and we can help you find the right volunteer opportunity for you.

EYECARE FOR YOU AND YOUR FAMILY

TLA members and their family can take advantage of great eyecare benefits.

Register now at iris.ca/benefits

or visit iris.ca/locations for a store near you.



BENEFIT & AFFINITY PROGRAMS



BENEFIT PROGRAMS



JOHNSTONE'S BENEFITS

Offering a quality benefit package that is a valuable, cost effective component of your employees' total compensation package. Offering benefits gives you a competitive edge in the job market and a tax deduction for your business.

Comprehensive, industry-specific benefits and the most stable rates in the industry are only a few reasons you should consider the TLA benefits program.

Through partnership with Johnstone's Benefits, the TLA offers comprehensive employee benefits packages specifically designed for TLA members:

- *Employers with as few as one employee (and up to 9 employees) have access to a full benefit package*
- *Larger employers can customize their plans to suit their specific needs and still benefit from the buying power of the TLA*

If you currently have a plan, let us provide you with a full benefits analysis and comparison to the TLA's program. If you're looking to implement a benefits plan for the first time, this program could be just right for your needs.

Benefit options include (but are not limited to):

- *Life insurance - group and additional (optional) individual coverage at discounted rates*
- *Accidental death and disablement (AD&D)*
- *Critical illness*
- *Employee & Family Assistance Program (EFAP)*

BENEFIT PROGRAMS



JOHNSTONE'S BENEFITS

- Extended health care includes full prescription drug coverage with no annual or lifetime maximums, medical services and supplies not covered by provincial health insurance and complete and comprehensive emergency hospital/medical insurance when you travel anywhere in the world
- Dental care coverage for basic preventative and minor restorative services, major restorative services including crowns and bridges, and orthodontia (braces) for dependent children
- Short and long term disability coverage that protects employees by providing an income to age 65
- Employee and family assistance plan providing employees and their families complete and confidential counseling services for any reason

Other benefits that can be included with any plan include: health spending accounts, group RRSP and pension plans, as well as industry leading optional benefits not otherwise available.

For more information, contact Johnstone's Benefits:

Phone: 604.980.6227

Toll free: 800.432.9707

Fax: 604.983.2935

www.jbenefits.com/clients/tla

BENEFIT PROGRAMS

Jardine Lloyd Thompson Canada Inc.



JLT's experts know the hazards TLA members face. Whether it's downed timber, heavy equipment or the liability issues concerning forest fires or pollution, JLT's insurance and risk management people are on top of the forestry business. Knowing your business is JLT's business.

GROUP BUYING POWER = AFFORDABLE MANAGEMENT OF RISK.

With global expertise and resources at hand, JLT's experts worked with the TLA to design a program specifically for TLA members. The result is a program of secure coverage backed by stable, long-term insurers who have served the BC forest industry for more than 30 years. And because of the TLA's sizeable membership, beneficial equipment and liability coverage and ratings can be obtained.

Other highlights of this exclusive JLT/TLA program include:

- *Liability coverage that address forest fire fighting and pollution*
- *Simple Loss Control initiatives to maintain productivity*
- *Claims free incentives*
- *Direct financial benefits to the TLA*
- *Manage your risks and increase your company's resilience – today!*

For more information, contact:

Peter Pringle

Managing Director

TLA Liaison

Direct: 250.413.2712

Cell: 250.361.5702

Email: ppringle@jltcanada.com

Steve Hicks

Senior Vice President

TLA Liaison

Direct: 250.413.2723

Cell: 250.588.1410

Email: shicks@jltcanada.com

Ben Fitzpatrick

Account Manager

TLA Liaison

Direct: 250.413.2725

Cell: 778.679.9019

Email: bfitzpatrick@jltcanada.com

AFFINITY PROGRAMS



COAST HOTELS, REFRESHINGLY LOCAL™

wherever you are in the West, you're near a Coast hotel

Coast Hotels is a proud supporter of the Truck Loggers Association and we are happy to extend preferred rates to all members.

For reservations, call toll free **1.800.663.1144** or online at **www.coasthotels.com/reservations** and enter **TRUCKLA** in the 'company' field.

Coast Hotels offers properties in locations throughout British Columbia, Alberta, Northwest Territories, and the Yukon. Every one of our hotels is special – and why would we want to change that? What every one of them has in common is an exceptional value, full-service experience and a refreshingly local approach. And, of course, a commitment to delighting our guests.

Along with full-service dining and more, there are certain amenities that come standard at all Coast Hotels. For starters, all guests receive complimentary WIFI. Add to that our genuine, friendly staff, refreshingly green program, triple sheeting, and Coast Rewards.

Reservations

coasthotels.com

1.800.663.1144

be sure to enter or quote company code: TRUCKLA

AFFINITY PROGRAMS

IRIS ADVANTAGE

Eye Care Benefits Program



IRIS Eye Examinations Eyeglasses

TLA members are eligible for IRIS Advantage exclusive eyewear benefits. Advantage benefits provide exceptional value to every member of your household, all employees of your company and the members of their household.

Registration is easy and only takes a few minutes. Go to iris.ca/benefits, select Truck Loggers Association from the dropdown menu, identify the number of family members you will be register. Complete the registration form by providing the name of the TLA Member Company and your personal information. Personalized offers will be emailed directly to you for each person registered.

IRIS Advantage benefits includes:

- *Save \$150 on Prescription Eye Glasses and/or Prescription Sunglasses**
- *Save \$50 on annual supply Contact Lenses*
- *Save \$50 on non-prescription Sunglass valued \$100 or more*

****See complete details on your personalized offers***

IRIS has 36+ locations in British Columbia, each with a dedicated Optometrist and team of eyecare professionals who provide complete eye health and vision examinations, eyeglasses, contact lenses, sunglasses and prescription safety glasses.

Plus you receive these great benefits: direct billing to 3rd party insurance, Interest-Free financing, Airmiles rewards on all purchases, No-Matter-What Guarantee, lenses from Nikon and a commitment to delivering the best quality vision and eye health care available.

AFFINITY PROGRAMS

IRIS ADVANTAGE

Eye Care Benefits Program



Questions about registration, how the program can benefit your business, or anything about IRIS

mail advantage@iris.ca **or call** 1-800-663-3937 extension 224

Safety Eyewear Program

Take Advantage of the group buying power of the TLA

Practicing safety on the job benefits everyone and protecting your eyes with good quality prescription safety eyewear is critical. Whether you are self-employed or employed by a member company, you receive the best possible pricing on your prescription safety eyewear with this plan.

Your IRIS Prescription Safety Eyewear program features a great selection of safety frames and lenses. The IRIS Opticians will help you to select the model and lens type best suited to your work environment, and vision needs. All prescription safety eyewear products provided to you by IRIS are manufactured to meet both ANSI Z87.1-2003 & CSA Z94.3-07 Standards.

Individual TLA Members: Access your Safety Eyewear Program benefits by presenting your TLA Membership at your local IRIS location.

Employer TLA Members: Contact our Safety division to set up a simple account so employees can access prescription safety eyewear at your TLA Group pricing

Email advantage@iris.ca **or call** 1-800-663-3937 extension 224

AFFINITY PROGRAMS



Our locally owned and family operated dealership specializes in happy customers and has been providing the Comox Valley and Powell River with vehicles and vehicle servicing for thirteen years. Our Courtenay location employs 40 staff members and was voted by the 2015 Comox Valley Record Reader's Choice as being the Best Place to Work. Dealer Principal and Owner, Neil Van Ierland is involved in his business on a daily basis.

Our Diamond Award winning sales team uses a low pressure sales approach. We advise and consult our customers to assist them with the purchase of a vehicle that best meets their needs. Our sales team is fully certified by Ford and up to date on all the latest information about new Ford vehicles. Each pre-owned vehicle in our inventory goes through a strict reconditioning process including a full 100 point safety inspection, oil change and CarProof Report which documents the vehicle history, including information regarding prior accidents or liens. It is important to us that our customers are fully informed and confident in the vehicle they are investing in. In 2015 we were proud to be voted the Comox Valley Record Reader's Choice for the best Used Vehicle Dealership and in best New Vehicle Dealership in 2016.

Our relationship with our customers does not end once the perfect vehicle has been selected. We are fully equipped to provide the necessary aftercare to protect our customers' investments. We understand that many people rely heavily on their vehicle for their day to day needs; our service department is staffed with Ford Certified Master Technicians and Diesel Specialists to keep our customers' vehicles performing flawlessly. We are fully equipped

AFFINITY PROGRAMS



to service any size of RV and have on site diagnostic equipment to service vehicles of all makes and models, 1996 or newer. Our customers also benefit from our Customer Loyalty Program with two main components; firstly, every fifth oil change is on us, with no charge to the customer, and secondly, 5% of every dollar a customer spends in parts and service is credited to their account for redemption on future services or parts and accessories purchases.

Westview Ford is proud to support the TLA. For exclusive TLA fleet pricing and offers, we invite you to directly contact one of our qualified representatives as follows:

PARTS

Corey Nickerson

250-338-5318

corey@westviewford.ca

SERVICE

Keith Davies

250-334-3161

keith@westviewford.ca

Ask about off-site service calls

NEW & USED VEHICLE SALES

Peter Britain

250-334-3161

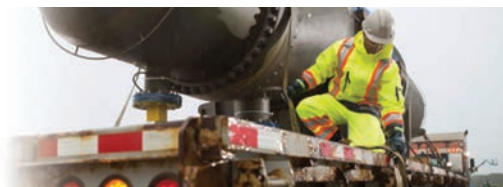
peter@westviewford.ca

Bob Crookall

250-334-3161

bob@westviewford.ca

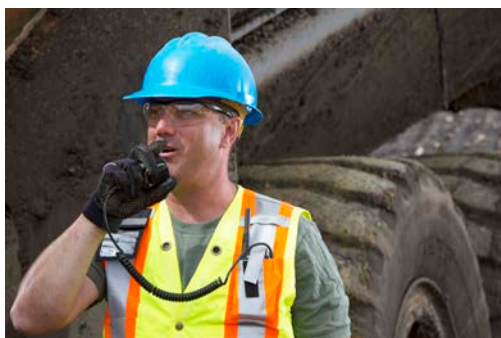
AFFINITY PROGRAMS



Mark's Commercial supplies thousands of businesses across Canada with compliant industrial workwear, footwear, PPE as well as branded uniforms and apparel. Outfit your crew from head-to-toe through bulk wholesales programs that send you the right products to the right place at the right time.

Mark's Commercial and The Truck Loggers Association have partnered together to give all member companies and their employees a special program price on workwear.

Valid at any Mark's retail store, simply show the card to receive your discount.



To receive your card, please contact the TLA at 604.684.4291 or membership@tla.ca with the number of cards you require for your employees.

AFFINITY PROGRAMS



Petro-Canada SuperPass

TLA members are able to realize significant savings, convenience, control and security when they use the Petro-Canada SuperPass credit card.

- A discount of 2.4 cents/litre on all grades of gasoline and diesel purchased at Petro-Canada retail service stations. A minimum of 200 litres/month must be purchased on your account to qualify for this discount.
- A discount of 5% on all parts and labour at Petro-Canada's Certigard Car Care Centres. The discount will be deducted from your invoice at the time of purchase.
- SuperPass Online Services – A secure website that gives you 24-hour control over your SuperPass cards and access to complete and detailed transaction activity.
- Flexible billing options – Receive your statement weekly or monthly, via the internet, by mail or fax.
- Flexible payment options – Pay your statement online using EFT (electronic funds transfer), ABW (automatic bank withdrawal) or e-post. You can also pay by telephone or by mail.
- Customized card restrictions – Restrict site access, time of day and day of week access, as well as fuel and non-fuel purchases, for your entire fleet or specific drivers.
- Detailed monthly purchase reports, including a complete record of each transaction.
- Online control of your fleet via SuperPass Online Services.
- PIN security – Individually numbered cards with individual PIN, or multi-PIN cards for each vehicle.
- Company logo – Have your cards imprinted with your own company logo.

For more information, contact Coastal Mountain Fuels at www.cmfuels.ca or 1-800-798-Fuel (3835).

We have been a long-term, (from day one) Associate member of the TLA for a few reasons. First the TLA represents the voice of our customers to key stakeholders, which makes for a strong and vibrant industry. Second the TLA provides great feedback which helps us understand the issues facing our customers. Finally by being actively involved in the association we build relationships and allows us to give back to the customers we serve.” – TLA member

Being a TLA member for almost 30 years has allowed our company to stay in touch with all the current policy changes and equipment trends. The TLA has created a great forum where all contractors can share what has worked and what has not worked for them in these changing times.” – TLA member

Forestry continues to be an important economic driver for Campbell River and the entire North Island. With the City of Campbell River now proud members of the TLA, we are able to work more collaboratively in developing initiatives to present to the provincial government, providing recommendations on policy, strategic planning, and issues that are important for the sustainability and growth of the forest industry.” – TLA member



solid group plans made simple

Comprehensive coverage designed for your business' employees and families.

- Extended Health Care
- Dental Care
- Life Insurance
- Accidental Deaths & Disablement
- Disability (Short Term & Long Term)

For more information and to request a customized quote, visit: jbenefits.com/clients/tla

PHONE: 604.980.6227
TOLL FREE: 1.800.432.9707
www.jbenefits.com

"The relationships built through being TLA members, both business and personal, have resulted in a fostering of cooperation between contractors. This cooperation and sharing of ideas has benefited our companies and I expect some of the friendships made will be long-term." – TLA member

"The TLA provides a way for logging contractors, First Nations and suppliers to develop long-lasting relationships. This has allowed us to be a successful company." – TLA member

"Our company has benefited from the efforts that the TLA has made in promoting First Nations partnerships and continuous efforts to improve contractor sustainability both with communications to government and licensees."

– TLA member

EQUIPMENT & LIABILITY INSURANCE PROGRAM

**TLA AFFINITY PROGRAM
PARTNER SINCE 2009**

Contact us for more information on all aspects of your commercial insurance needs

Peter Pringle | Managing Director

T: +1 250 413 2712

E: ppringle@jltcanada.com

Steve Hicks | Senior Vice President

T: +1 250 413 2723

E: shicks@jltcanada.com

Ben Fitzpatrick | Account Manager

T: +1 250 413 2725

E: bfitzpatrick@jltcanada.com

www.jltcanada.com



at Westview Ford, we
GO FURTHER



So YOU can TOO

Ask about our
EXCLUSIVE TLA Offers
Parts • Service • Sales



4901 Island Highway North, Courtenay, BC
www.westviewford.ca • 250-334-3161